

# Children and Young People's Services Select Committee

31 October 2018

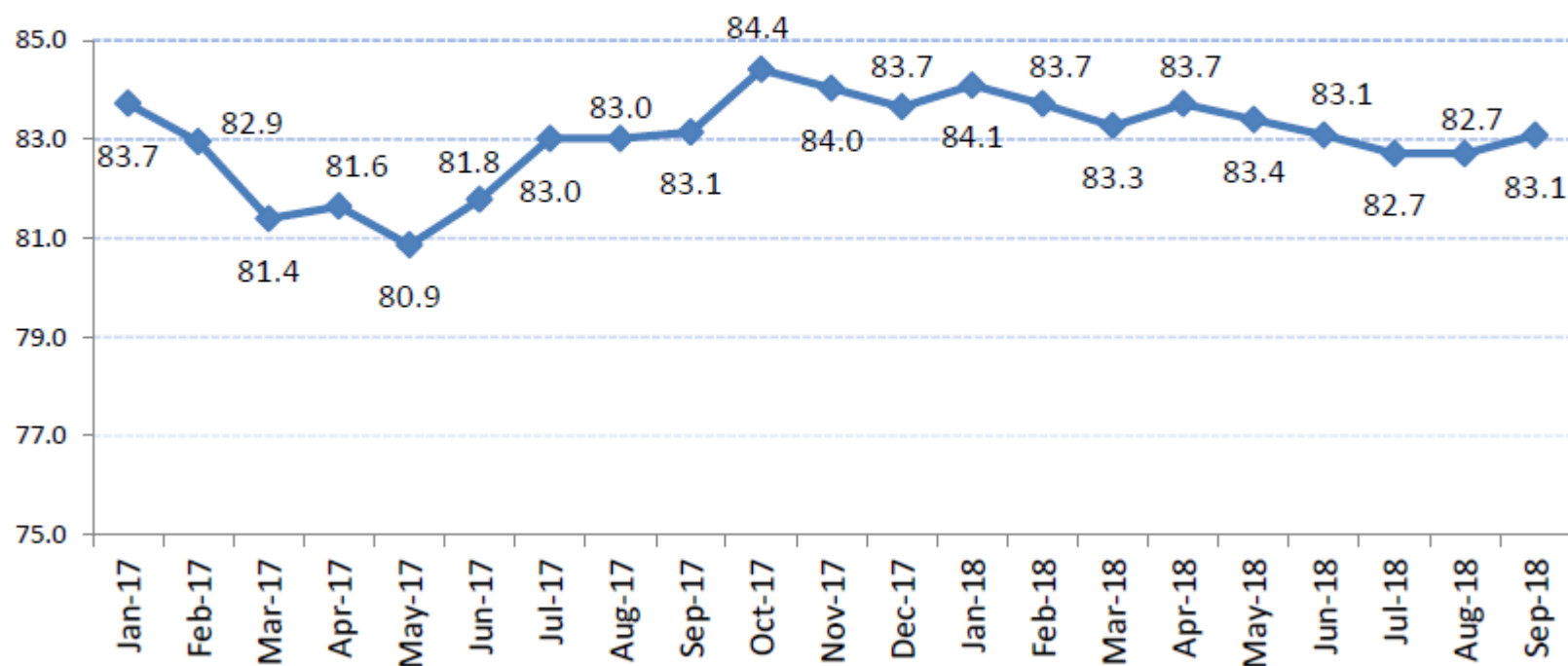
*Improving educational outcomes in West Sussex:  
Championing all our children!*

# **West Sussex Pupil Performance 2018**

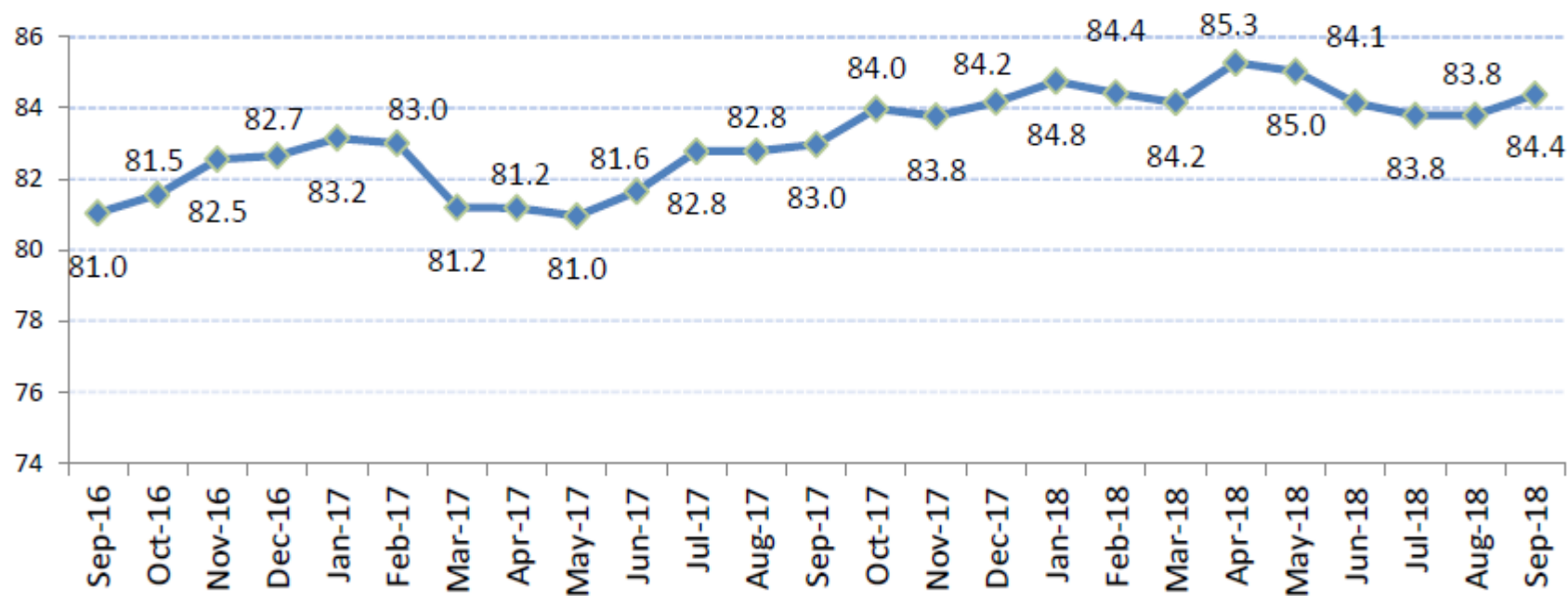
Children and Young People's Services Select Committee  
31 October 2018

# Outcomes from Inspections by Ofsted

### Percentage Schools in WSX that are rated overall Good or Outstanding - All Schools and Academies - Average



## Percentage Pupils in WSX Schools that are rated overall Good or Outstanding - All Schools and Academies - 30 Sept 2018



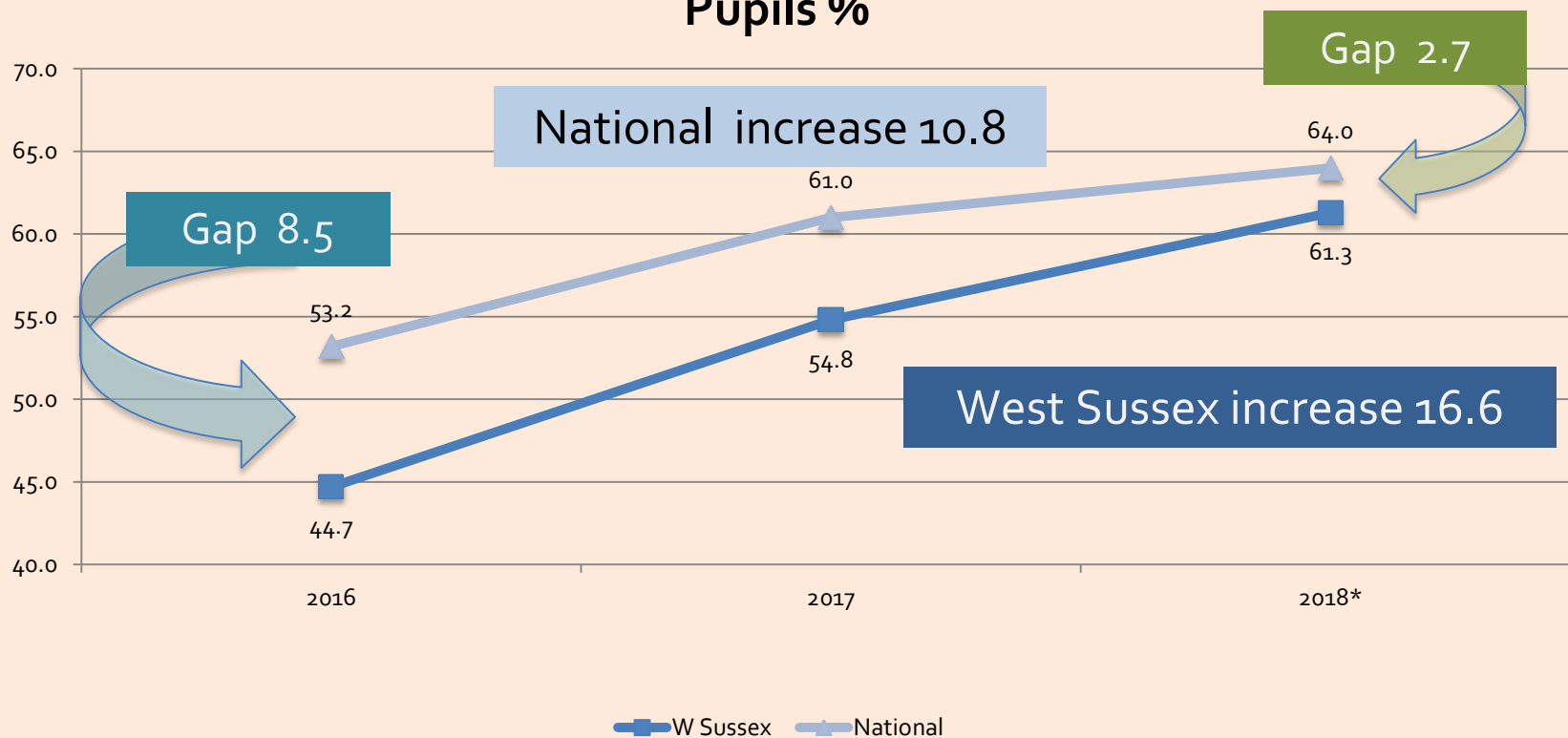
Our target is to be over 90% of schools and pupils in good or outstanding schools. This is at least another 6,500 more children in good or better schools

# Pupil performance data In the Primary Phase

# Trends in attainment over 3 years

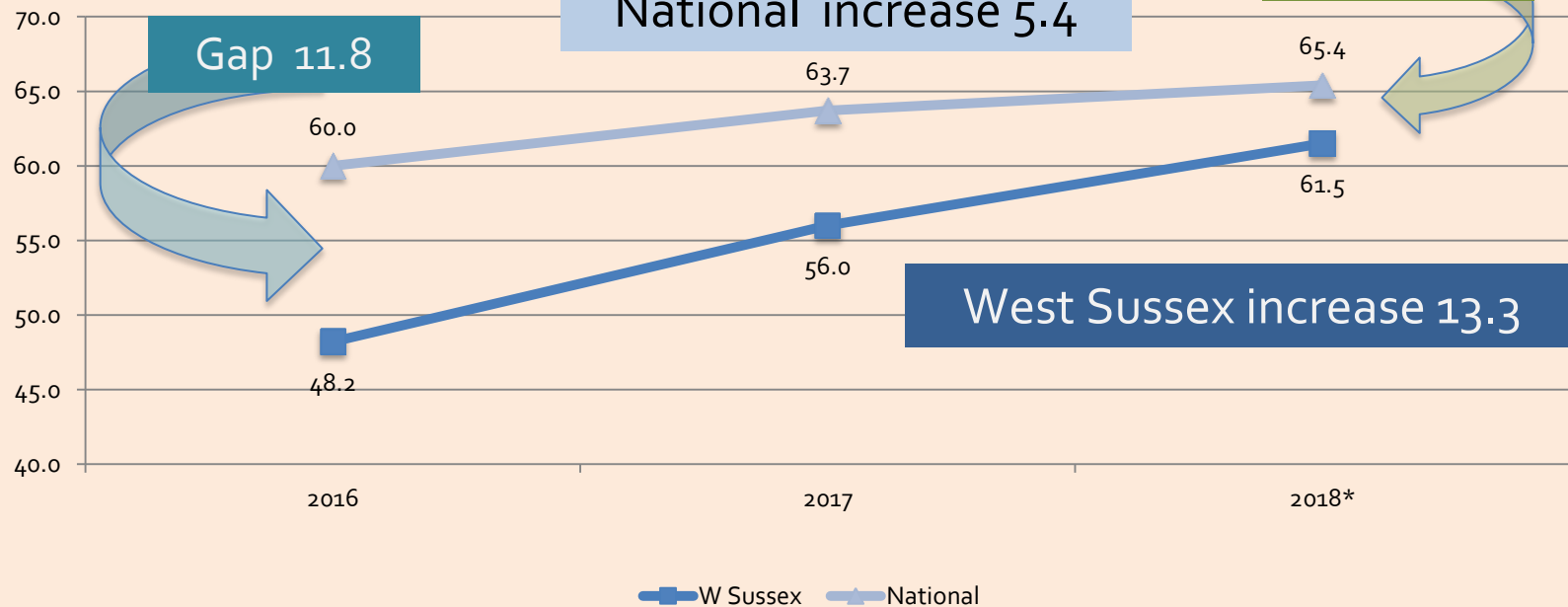
Showing changes in West Sussex since the new curriculum was assessed

## KS2 - Reading, Writing & Maths - Expected Standard+ - All Pupils %

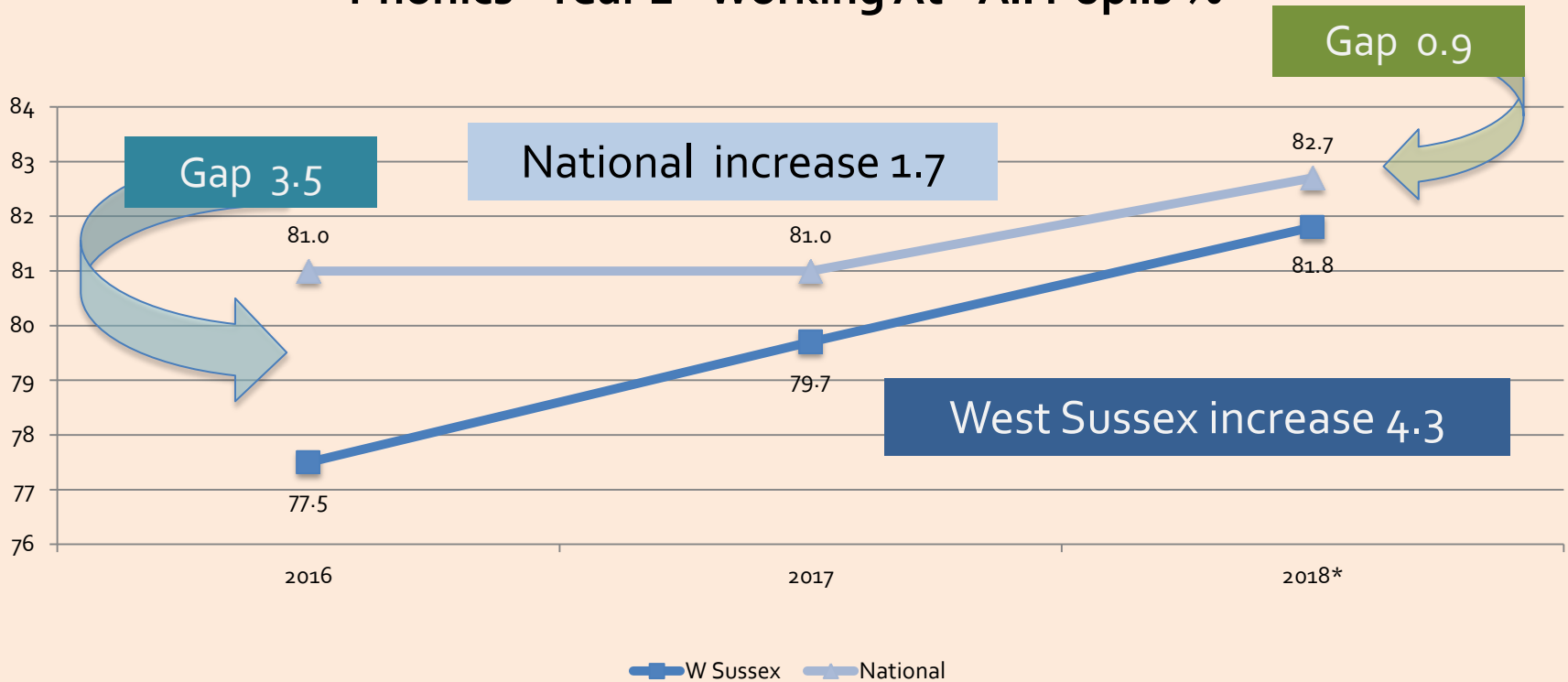




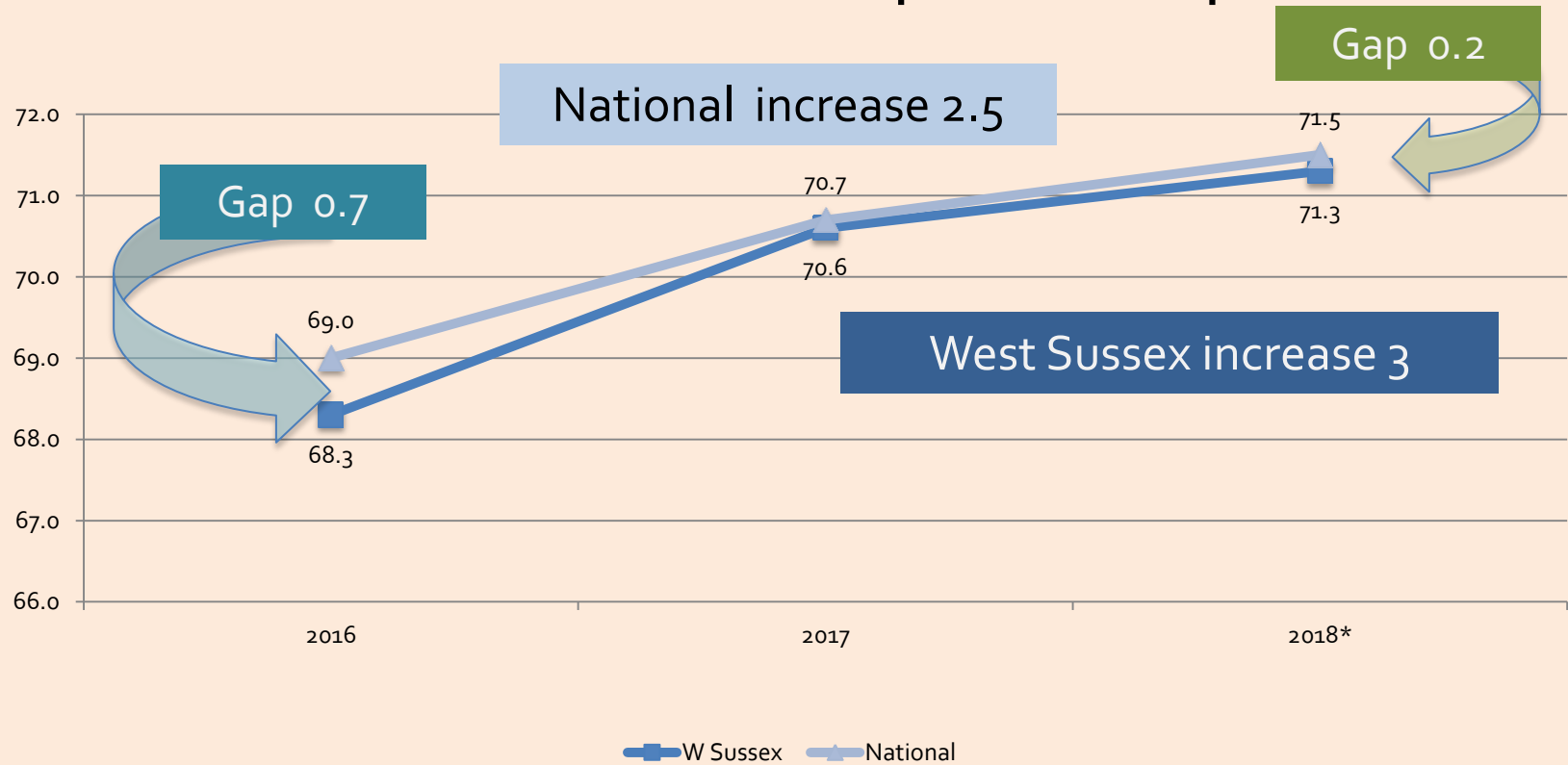
## KS1 - Reading, Writing & Maths - Expected Standard+ - All Pupils %



## Phonics - Year 1 - Working At - All Pupils %

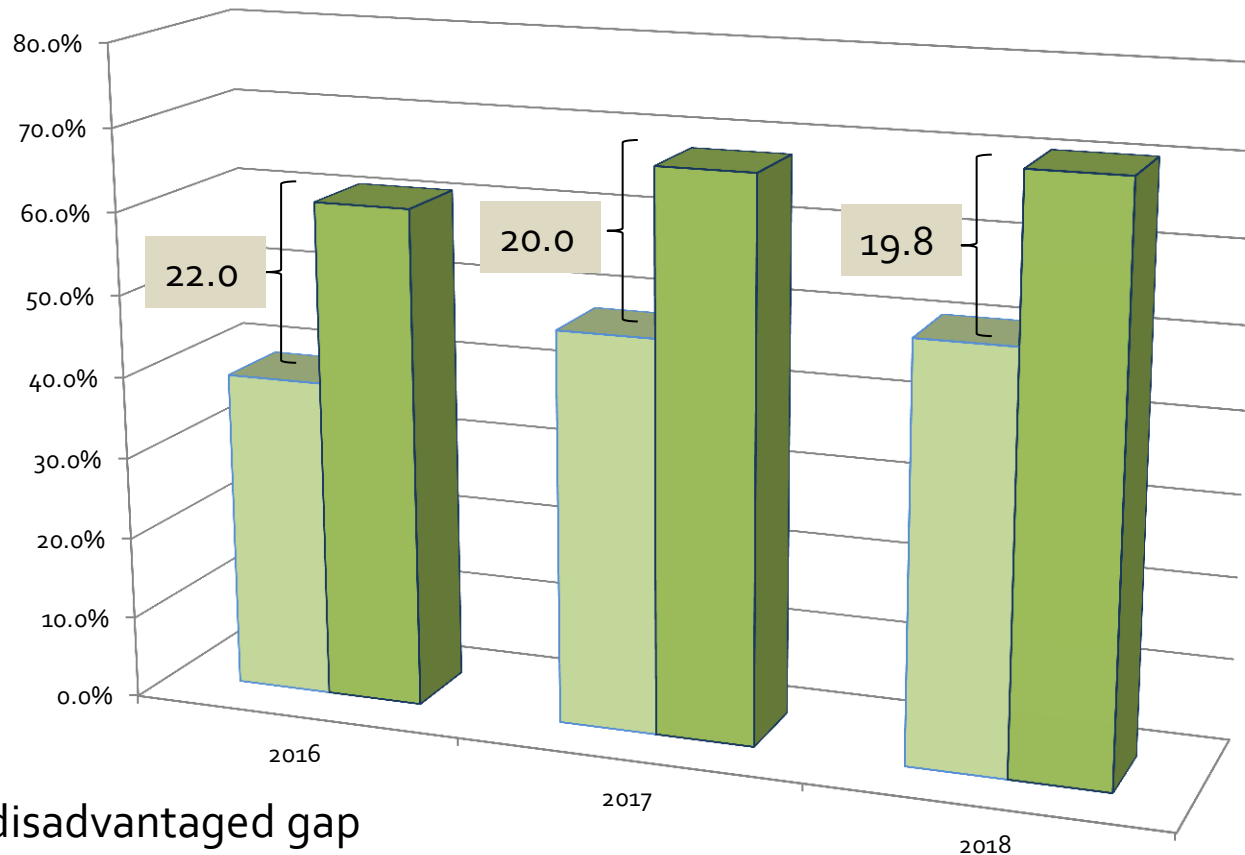


## EYFSP - Good Level of Development - All Pupils %



# Disadvantaged gaps Key Stage 2

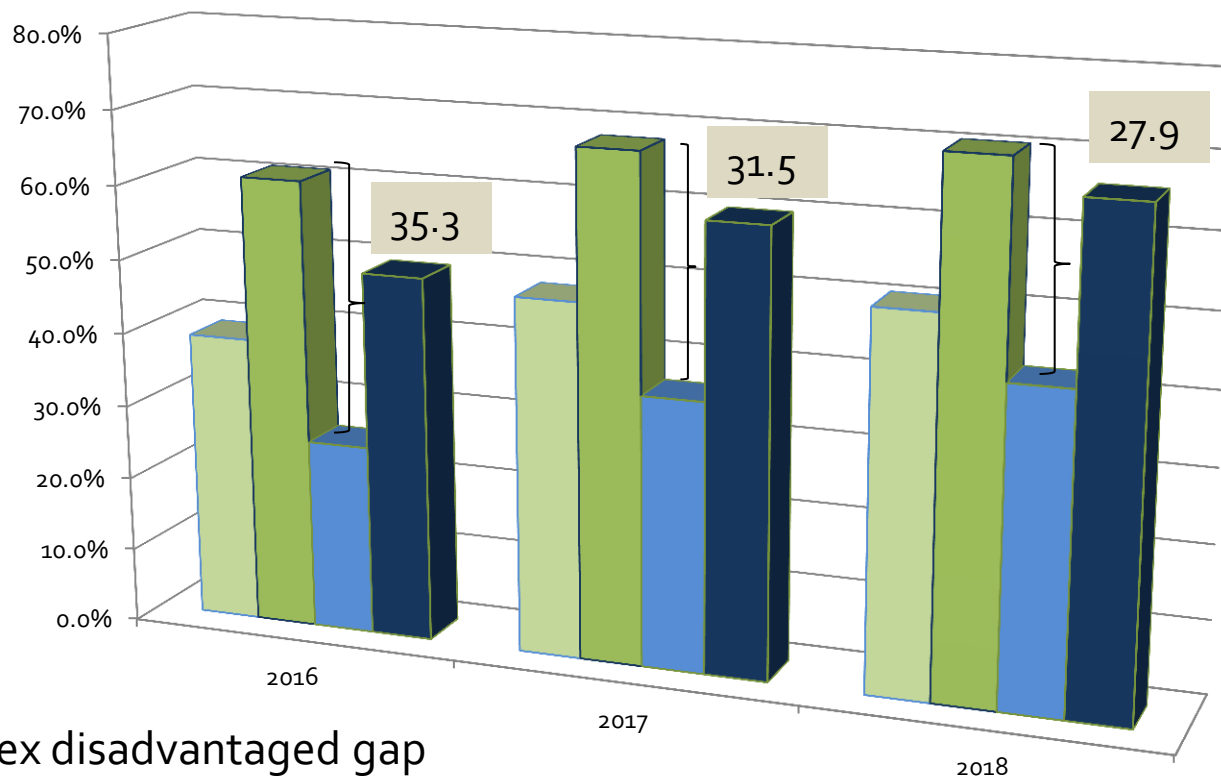
# Key Stage 2, disadvantaged pupils



National disadvantaged gap

	2016	2017	2018
<span style="color: #92D050;">■</span> National % disad	39.0%	48.0%	50.6%
<span style="color: #6B8E23;">■</span> National % others	61.0%	68.0%	70.4%

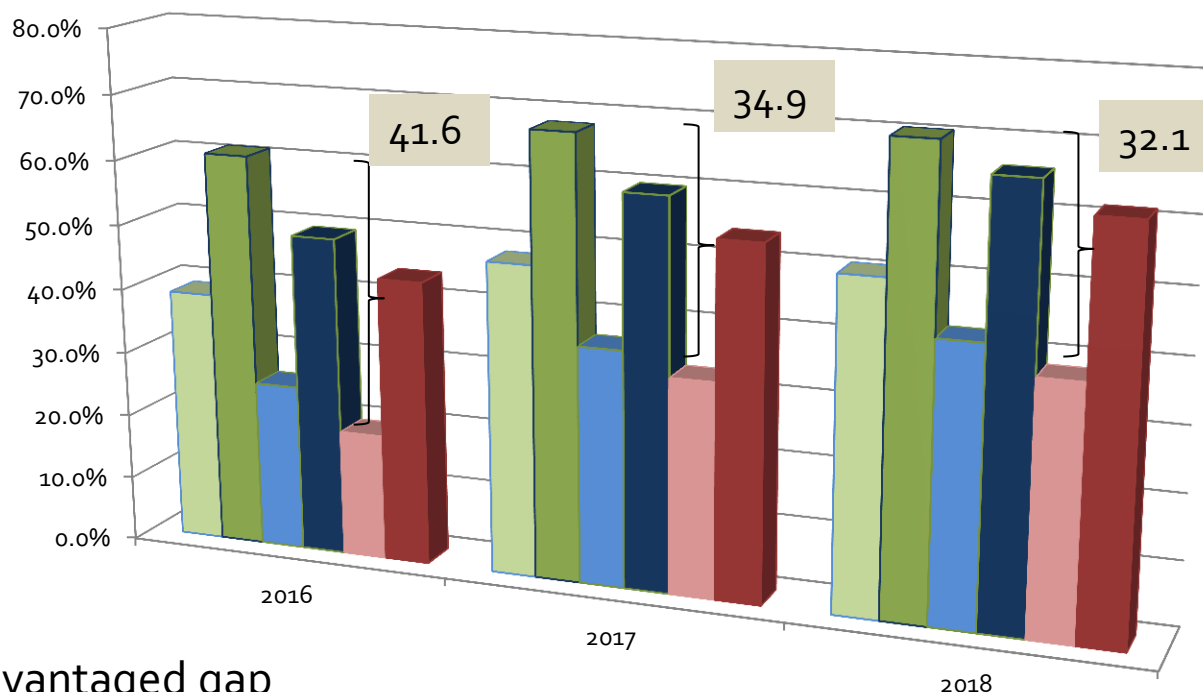
# Key Stage 2, disadvantaged pupils



West Sussex disadvantaged gap

	2016	2017	2018
National % disadvantaged	39.0%	48.0%	50.6%
National % others	61.0%	68.0%	70.4%
West Sussex % disadvantaged	25.7%	36.5%	42.5%
West Sussex % others	49.4%	59.8%	66.0%

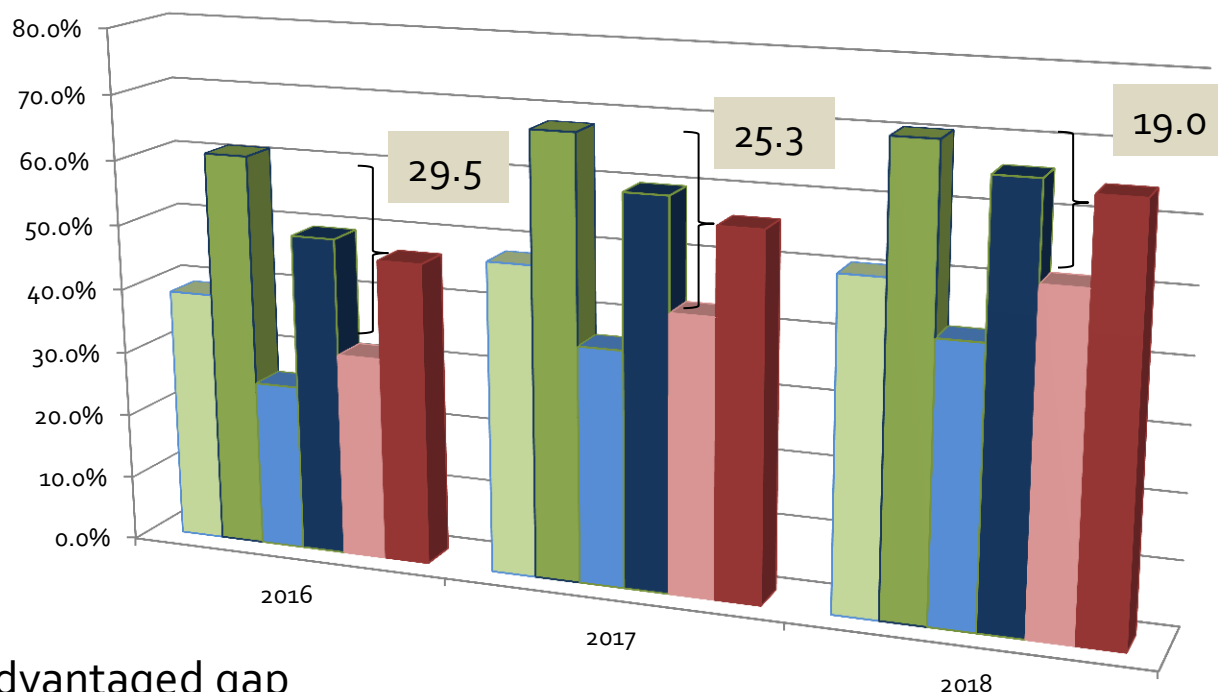
# Key Stage 2, disadvantaged pupils



West disadvantaged gap

	2016	2017	2018
National % disad	39.0%	48.0%	50.6%
National % others	61.0%	68.0%	70.4%
West Sussex % disad	25.7%	36.5%	42.5%
West Sussex % others	49.4%	59.8%	66.0%
West % disad	19.4%	33.1%	38.3%
West % others	43.9%	54.1%	61.4%

# Key Stage 2, disadvantaged pupils



North disadvantaged gap

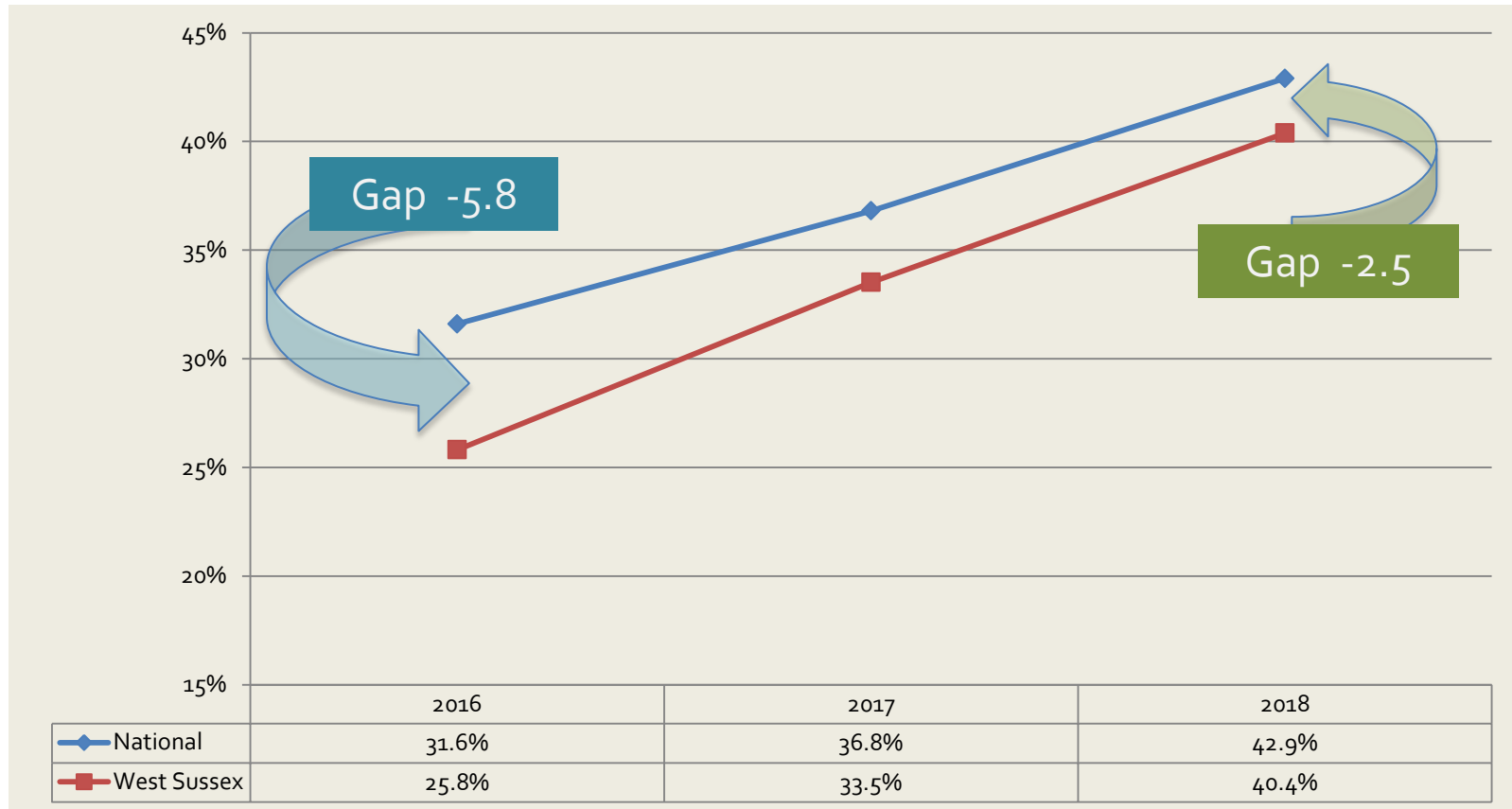
	2016	2017	2018
National % disad	39.0%	48.0%	50.6%
National % others	61.0%	68.0%	70.4%
West Sussex % disad	25.7%	36.5%	42.5%
West Sussex % others	49.4%	59.8%	66.0%
North % disad	31.5%	42.7%	51.4%
North % others	46.7%	56.0%	64.3%



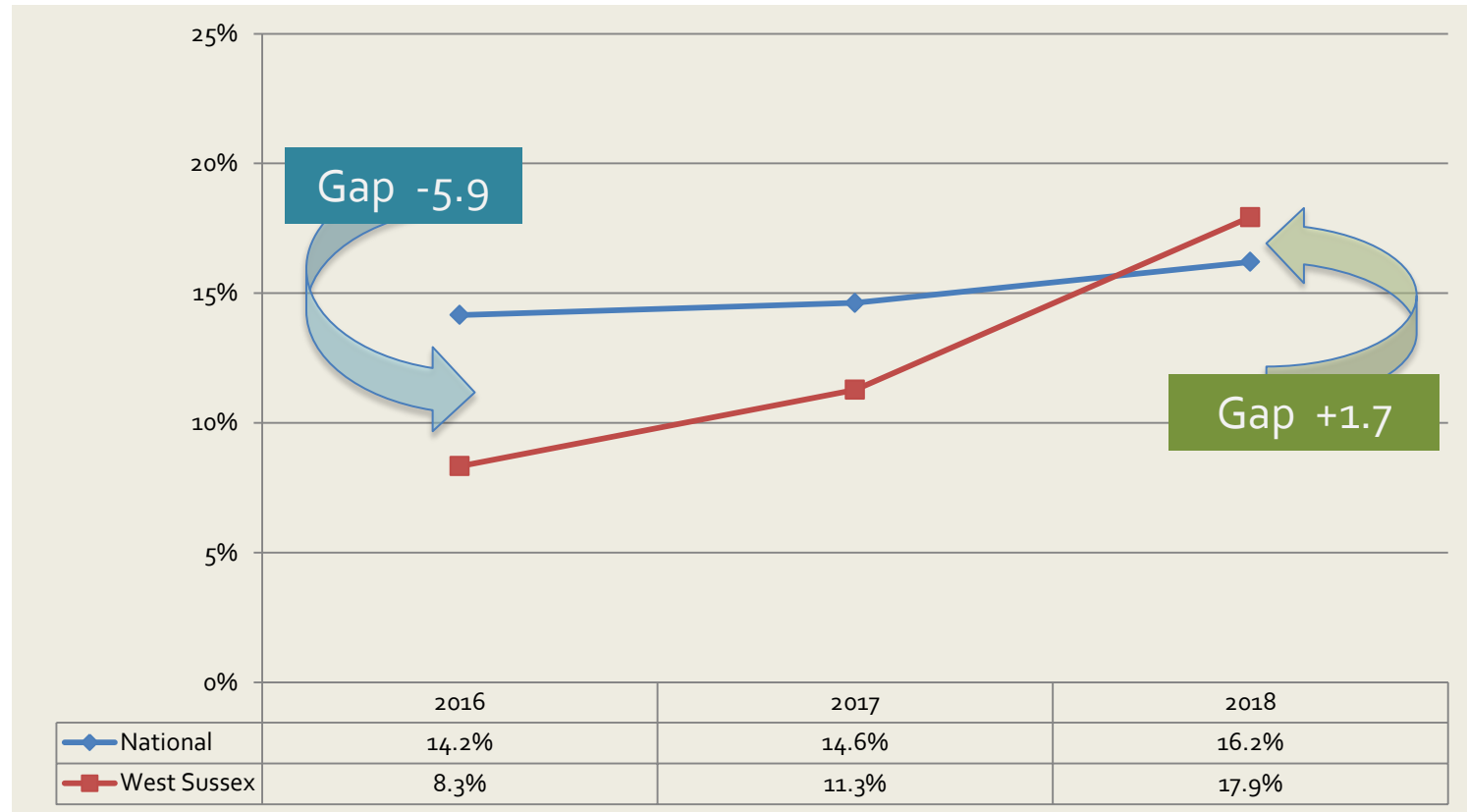
# SEND gaps Key Stage 2

## SEND Support, National and West Sussex

### Key Stage 2 proportion of pupils at expected standards or better for RWM



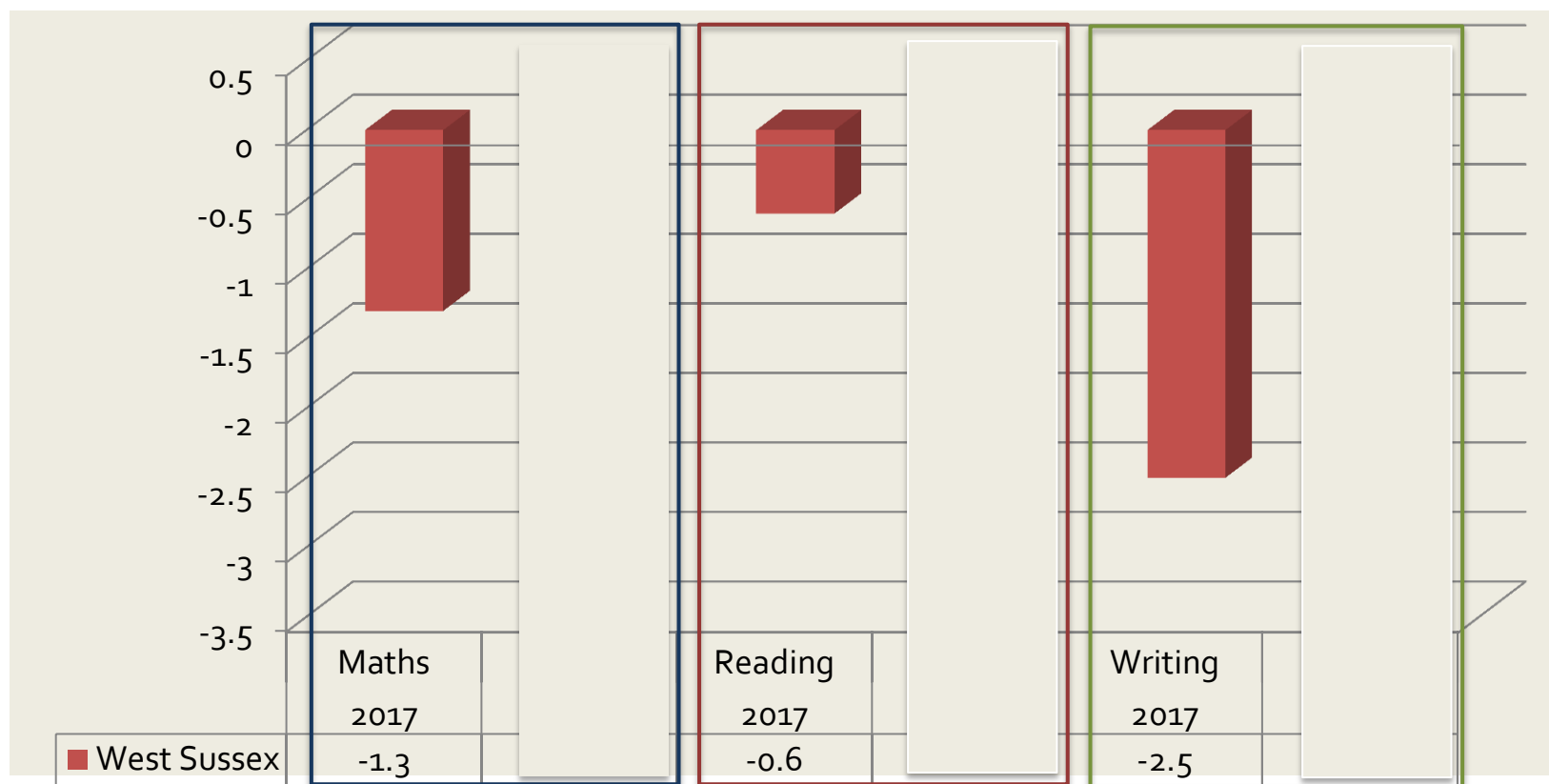
## EHCP or statement, National and West Sussex Key Stage 2 proportion of pupils at expected standards or better for RWM



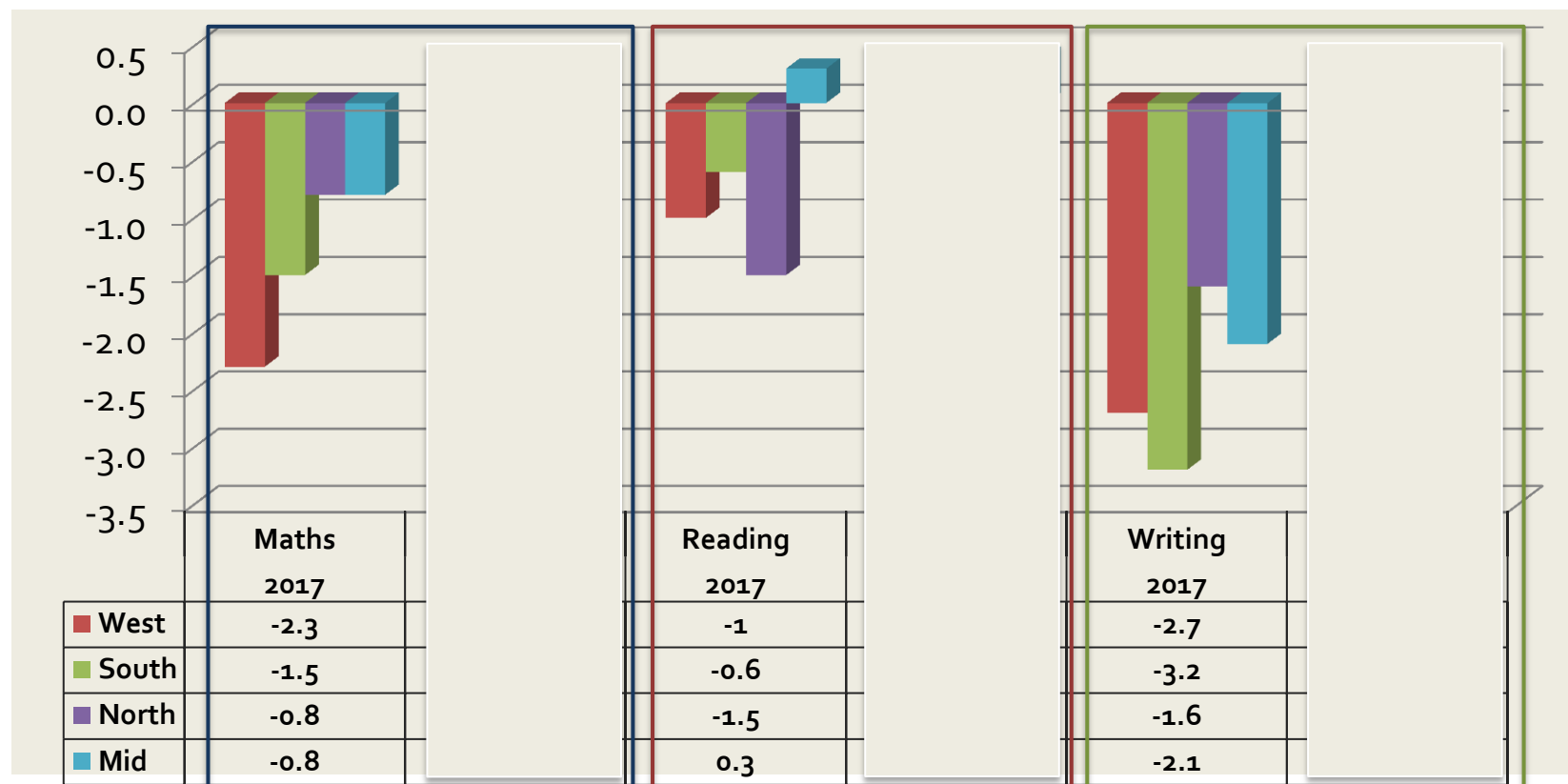
# Trends in pupil progress

## Key Stage 1 to 2

# Pupil Progress in West Sussex



# Pupil Progress by area



# Key Stage 4 Early analysis

First year most GCSE subjects were graded 9 – 1 rather than A\* to G.  
Examinations contained an increase in difficulty

ATTAINMENT	West Sussex			National - State Funded Maintained Schools		
	2018	2017	Movement	2018	2017	Movement
ALL PUPILS						
Attainment 8	46.5	46.8	-0.30	46.5	46.4	0.1
Progress 8	0.04	0.03	0.01	-0.03	-0.03	0.00
Basics (C+ "strong pass" in English and Maths)	43.4%	45.3%	-1.90%	43.2%	42.9%	0.3%
Basics (C+ "standard pass" in English and Maths)	65.2%	66.0%	-0.80%	64.2%	64.2%	0.0%

- Similar to last year
- Slight increase in progress 8



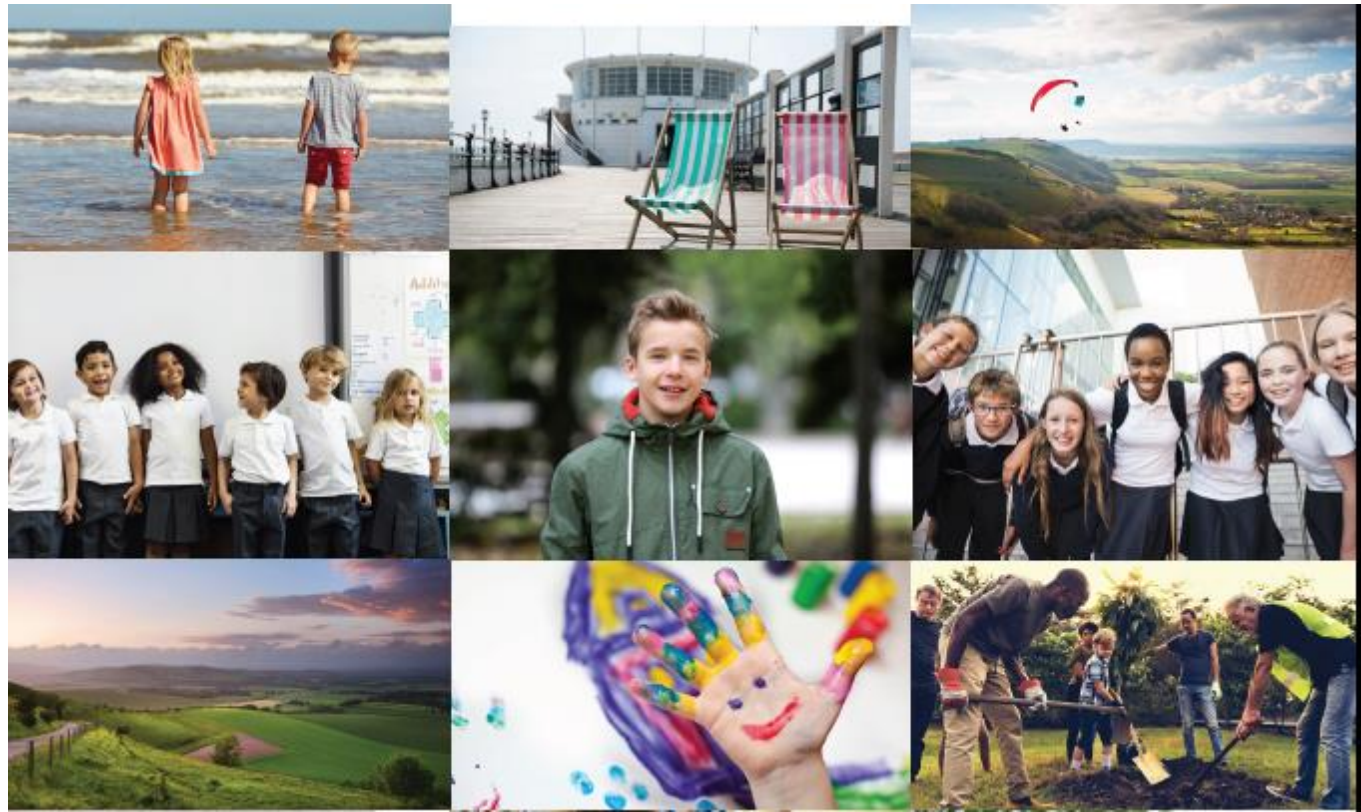
*Improving educational outcomes in West Sussex:  
Championing all our children!*

# **West Sussex School Effectiveness Strategy**

Children and Young People's Services Select Committee  
31 October 2018

# School Effectiveness Strategy 2018-2022





# School Improvement

# School Improvement

## Aim:

**By 2022 there will be an effective process to challenge and support all schools to increase quality and standards of education**

## Objectives:

- i. Monitor all schools and categorise local authority maintained schools annually to ensure that council resources are targeted where they are most needed to make the biggest difference.
- ii. Enhance the support provided to schools that are deemed not yet 'Good'
- iii. Make additional services available to all schools and settings through a comprehensive traded portfolio of services
- iv. Work in partnership with Ofsted and Regional Schools Commissioner where schools are judged 'Inadequate'
- v. Broker and commission strong leadership in West Sussex and beyond to provide school-to-school support



# School Organisation

# School Organisation

## Aim:

**By 2022 West Sussex will have a strong model of sustainable education for all types of school and key stages**

## Objectives:

- i. Establish a preferred model of all-through primary provision for children from 4-11 years old.
- ii. Secure sufficient places for children in all phases and types of school.
- iii. Maximise the proportion of children being offered a place at one of their three school preferences.
- iv. Primary schools will be of a sufficient size to be viable in the future, offer a high quality and broad curriculum, attract pupils from the local community and provide strong outcomes for children.
- v. Primary schools will be readily accessible to pupils; for the majority of children within walking distance in urban areas and with transport to school in rural areas.